



## NEW EQUIPMENT

- All types of pumping equipment, centrifugal and positive displacement.
- Quality, reliable products from well recognized brand name manufacturers.
- Expert equipment selection tailored to your application requirements.



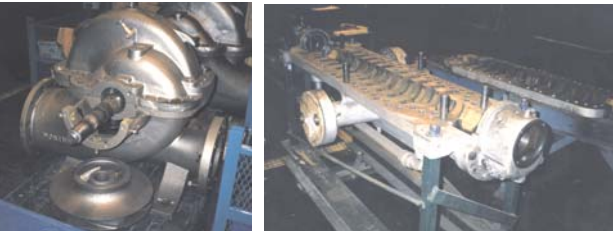
## REPLACEMENT PARTS

- Replacement parts for all types of pumps.
- Only top quality OEM and aftermarket repair parts in a variety of materials.
- All types of shaft seals; mechanical, lip, dynamic and packing.



## ACCESSORY ITEMS

- Full line of accessory items to complete your installation; valves, pipe connectors, pulsation dampeners, gauges, strainers, motors, control panels, level controls, adjustable speed drives, etc.



## REPAIR SERVICE

- Professional rotating equipment repair and component refurbishing.
- Repairs to all pump types and sizes.



## SPECIALTY SERVICES

- Laser shaft alignment.
- Pump performance and hydrostatic testing.
- Motor electrical fitness testing.
- Field commissioning, inspection, alignment and repair of equipment.
- Vibration analysis and trending.
- Infrared thermography analysis.
- Product training and educational seminars.





## ALL-FLO

Complete line of air-operated double diaphragm pumps in both metallic and non-metallic construction with a variety of elastomers and porting arrangements, supported with an extensive assortment of accessories.

## AMT

Extensive line of industrial and commercial duty standard, self-priming, vertical and submersible centrifugal, gear and diaphragm pumps in both electric and engine driven configurations.

## BJM

Heavy duty and general service submersible pumps for clean, solids laden, corrosive and abrasive services. Available with flanged, threaded and hose barb connections in a variety of material combinations with various control and installation accessories.

## EBARA

Stainless steel end-suction, multi-stage horizontal, multi-stage vertical, self-priming and submersible pumps with both threaded and flanged connections. Also a broad range of clean and solids handling cast iron submersible pumps and accessories.

## ENVIROGEAR

Complete line of process duty sealless magnetic drive internal rotary gear pumps suitable for use in a wide array of applications, available in a variety of materials and configurations.

## GORMAN-RUPP

Full line of self-priming, standard end-suction, engine driven and submersible type pumps for use with clean, corrosive, solids laden and abrasive fluids. Available in a variety of construction materials and drive configurations.

## ITT INDUSTRIES

- *Goulds Pumps*
- *ProSmart*
- *PumpSmart*
- *ProCast*

ITT Industries **Goulds** Pumps division offers a complete line of pumping equipment for use in handling every type of fluid with end-suction, double suction, multi-stage, magnetic drive, vertical and axial flow designs. ITT Industries Monitoring and Controls division offers **PumpSmart** advanced VFD's, specifically designed for controlling centrifugal pumps and the **ProSmart** wireless condition monitoring system. The **ProCast** division offers OEM quality aftermarket pump replacement parts for use in many popular brands of pumps.

## MEGGA

Commercial duty cast iron horizontal end-suction centrifugal pumps in both close-coupled and frame mounted configuration. Product utilizes industry standard mechanical seals and motors for simple and economical maintenance.

## MORRISON

High quality custom manufactured large capacity vertical axial flow pumps for use in high volume services such as flood control and drainage.

## MTH

Single and multi-stage regenerative turbine and centrifugal type pumps in close-coupled and frame mounted configurations in both sealed and canned motor designs. Available in iron, bronze and stainless steel materials of construction.

## NATIONAL

Heavy duty vertical turbine pumps in a variety of materials and configurations. High efficiency hydraulic designs are combined with quality features to extend service life and reliability.

## SEALING PRODUCTS

**TOM-PAC** line of high performance shaft packing compounds and advanced lubrication products. **AST** line of mechanical shaft seals for use in centrifugal and positive displacement pumps.

## SEPEX

Extensive line of high quality progressing cavity type pumps available in a variety of materials and drive configurations. Ideal for the transfer or metering of viscous or shear sensitive fluids and for many other tough and unique pumping applications.

## VERTIFLO

Full line of vertical, horizontal and self-priming industrial duty centrifugal pumps in a variety of materials and drive configurations.



**RELY ON US FOR ALL YOUR PUMP NEEDS!**

3235 Wharton Way, Mississauga, Ontario Canada L4X 2B6  
Phn: 905-629-3100, Fax: 905-629-3500, email: info@prospectech.com

*“Representatives to serve you across Southern Ontario”*



ISO 9001:2008  
System Certification