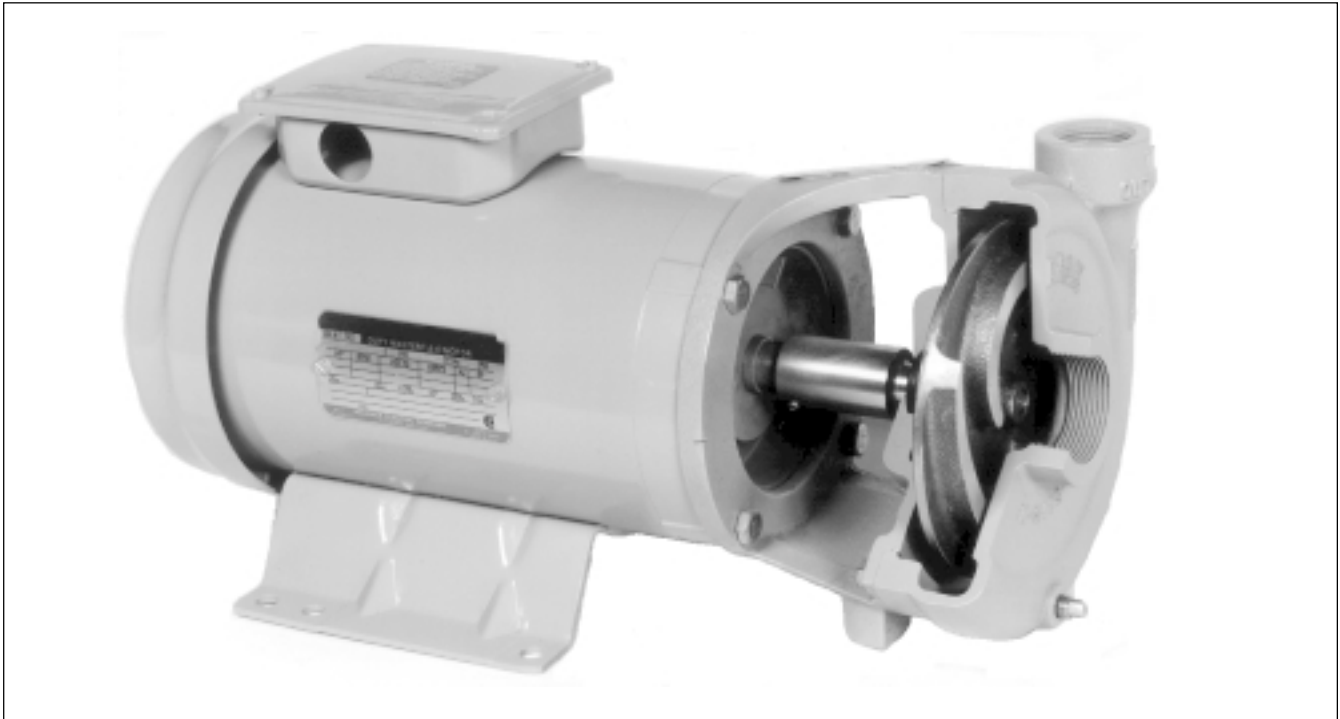


VERTIFLO SERIES 1300, MODEL 1312

Quality Design Features Assure Long, Trouble-Free Service

**WIDE RANGE OF APPLICATIONS:**

- General Pumping
- Process
- Chemicals
- Deionized Water
- Wash Systems
- OEM

CAPABILITIES:

- Capacities to 240 GPM
- Heads To 160 Feet TDH
- 1750 and 3500 RPM

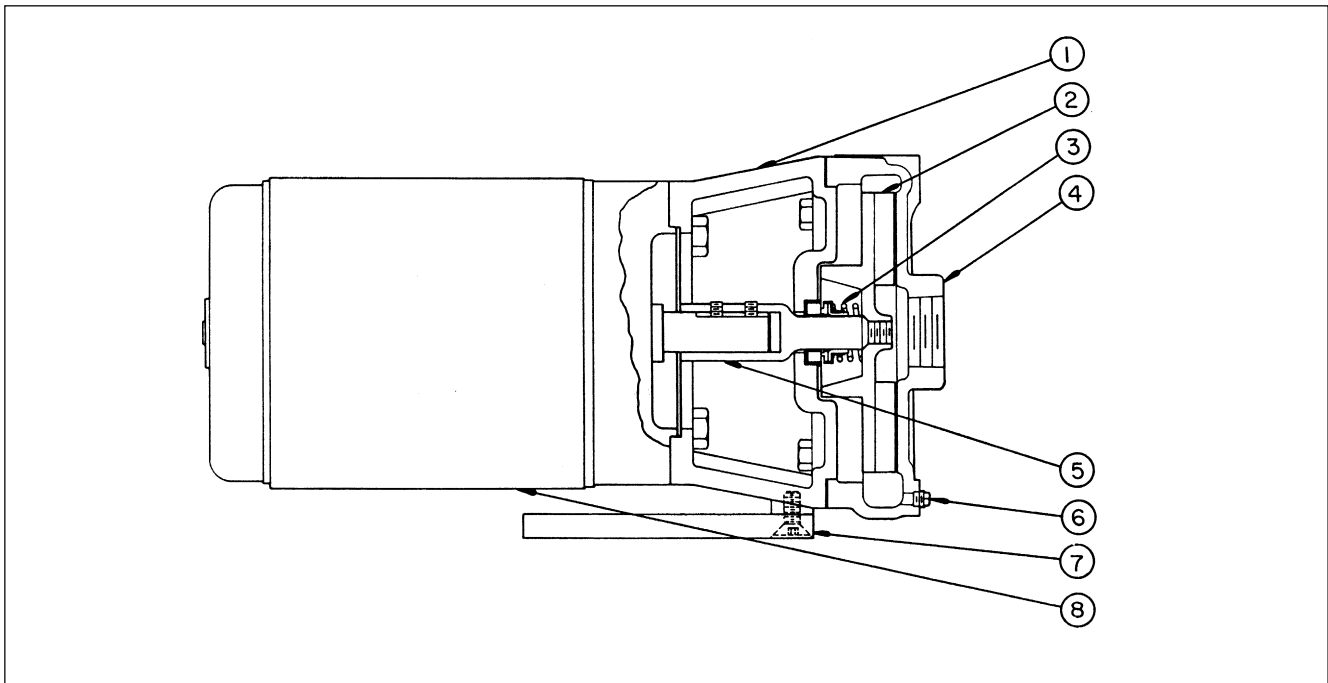
CONSTRUCTION:

- All Iron
- Bronze Fitted
- 316 Stainless Steel Fitted
- All 316 Stainless Steel

FEATURES:

- Close-Coupled Design Saves Installation Space
- Back Pull-Out Design
- Standard NEMA C-Face Motor
- Standard Size Mechanical Seal
- Pump Volute, Impeller and Mounting Bracket are Heavy Cast Metal
- Semi-Open Impeller
- Threaded NPT Suction and Discharge Connections

Model 1312 horizontal motor-mounted end suction pumps are designed for use with NEMA standard C-face electric motors. This rugged and dependable pump will provide many years of dependable service.



CUSTOMER Benefits

1. Motor Support and Seal Housing
one-piece casting

- Assures positive alignment of motor and pump with registered fits

2. Impeller
semi-open design with balance hub. Secured to shaft by taper and threads.

- High quality - smooth performance
- Easily removed

3. Mechanical Seal
Self-aligning design

- No adjustment required

4. Casing
Back pull-out design. Discharge orientation options.

- Rotating element easily removed - casing remains in piping
- Casing may be rotated in 90° increments to accommodate various piping requirements

5. Shaft
316 stainless steel material. Standard with taper and threads.

- Long lasting and replaceable

6. Support Foot Adaptor (optional)

- Bolt-on type design for versatility

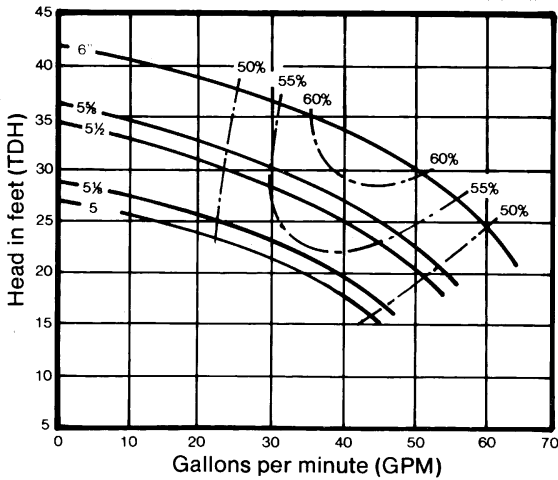
7. C-Face Motor
Standard

- Readily available

VERTIFLO PUMP COMPANY Performance Curves

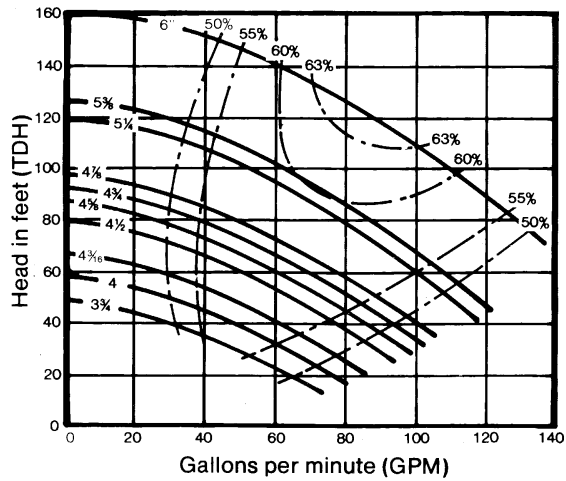
Series 1300 / Model 1312 Size 1 1/2 X 1 X 6

1750 RPM



HP	SF	DIA
3/4	1.15	6
	1.00	6
1/2	1.15	5 5/8
	1.00	5 1/2
1/3	1.15	5 1/8
	1.00	5

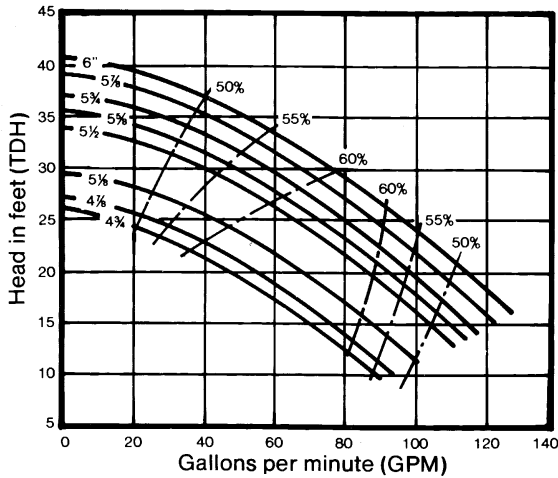
3500 RPM



HP	SF	DIA	HP	SF	DIA
5	1.15	6	1 1/2	1.15	4 5/8
	1.00	6		1.00	4 1/2
3	1.15	5 3/8	1	1.15	4 3/16
	1.00	5 1/4		1.00	4
2	1.15	4 7/8			
	1.00	4 3/4			

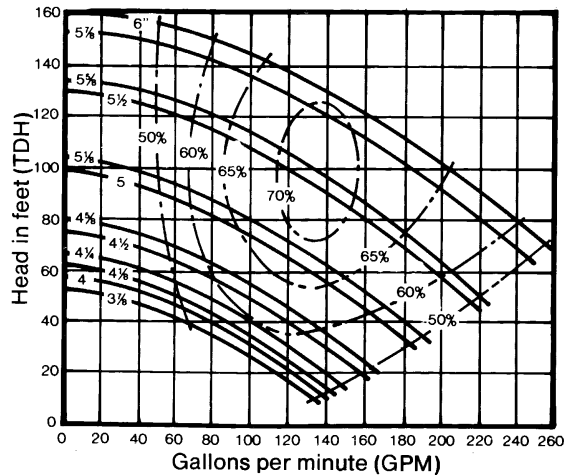
Series 1300 / Model 1312 Size 2 X 1 1/2 X 6

1750 RPM



HP	SF	DIA	HP	SF	DIA
1 1/2	1.15	6	3/4	1.15	5 5/8
	1.00	6		1.00	5 1/2
1	1.15	5 7/8	1/2	1.15	5 1/8
	1.00	4 7/8		1.00	4 7/8

3500 RPM



HP	SF	DIA	HP	SF	DIA
7 1/2	1.15	6	2	1.15	4 5/8
	1.00	5 7/8		1.00	4 1/2
5	1.15	5 5/8	1 1/2	1.15	4 1/4
	1.00	5 1/2		1.00	4 1/8
3	1.15	5 1/8	1	1.15	4
	1.00	5		1.00	3 7/8

Performance at Casing Discharge Flange

Curves Show Performance with Liquid Having Specific Gravity 1.0 Viscosity • 30 SSU

CUSTOMER _____ CUSTOMER NO. _____

PROJECT _____

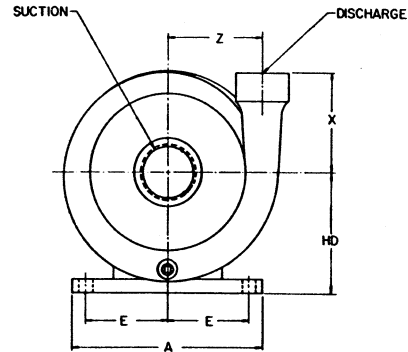
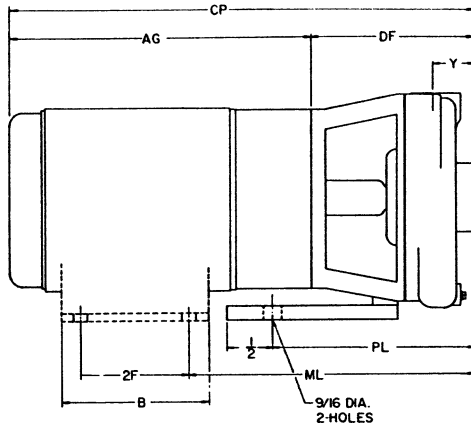
ENGINEER _____

CONTRACTOR _____

CONDITIONS: _____ GPM _____ TDH _____ HP _____ EFF% _____ IMP. DIA _____

1300

1300 Series / Model 1312



Size 1 1/2 x 1 x 6

RPM	HP	PUMP FOOT	SUC	DIS	A	AG	B	CP	E	2F	DF	H*	HD	ML	PL	X	Y	Z
1750	1/8	NOT REQD	1 1/2" NPT	1" NPT	6.50	9.29	4.25	15.17	2.44	3.00	5.88	NA	4.38	8.75	5.50	3.75	1.25	3.50
	1/2					9.94		15.82										
	3/4					9.29		15.19										
1	10.29					16.17												
3500	1					11.06	16.94	5.94	2.75	5.00		.44	4.50					
	1 1/2					12.07	17.82											
	2					13.68	19.56											
	3																	
5																		

*Dimensions are for TEFC motors only
Optional pump foot shown for motors less feet

Size 2 x 1 1/2 x 6

RPM	HP	PUMP FOOT	SUC	DIS	A	AG	B	CP	E	2F	DF	H*	HD	ML	PL	X	Y	Z
1750	1/2	NOT REQD	2" NPT	1 1/2" NPT	6.50	9.29	4.25	15.67	2.44	3.00	6.38	NA	4.38	9.25	6.00	3.88	1.63	3.63
	3/4					9.94		16.32										
	1					10.19		16.57										
	1 1/2					10.29	16.67											
3500	1 1/2					11.06	17.44	5.94	2.75	5.00		.44	4.50					
	2					12.07	18.32											
	3					13.68	20.06											
	5					15.18	21.56											
	7 1/2																	

*Dimensions are for TEFC motors only. NA= not applicable
Optional pump foot shown for motors less feet

Not for construction unless certified, some dimensions may vary $\pm 1/2"$. Pump Construction: _____

CUSTOMER _____ CUSTOMER NO. _____
 PROJECT _____ SERIAL NO. _____
 ENGINEER _____ LOCATION _____
 CONTRACTOR _____
 PUMP Model Size Curve No. GPM Head SP. GR. @Temp.
 DATA _____
 MOTOR Mfr. HP RPM Volt-Phase-Cycle Frame ENC. Furnished by Mounted by
 DATA _____
 Shop Order _____ Certified by _____ Date _____