

# TSP

STAINLESS STEEL PUMP



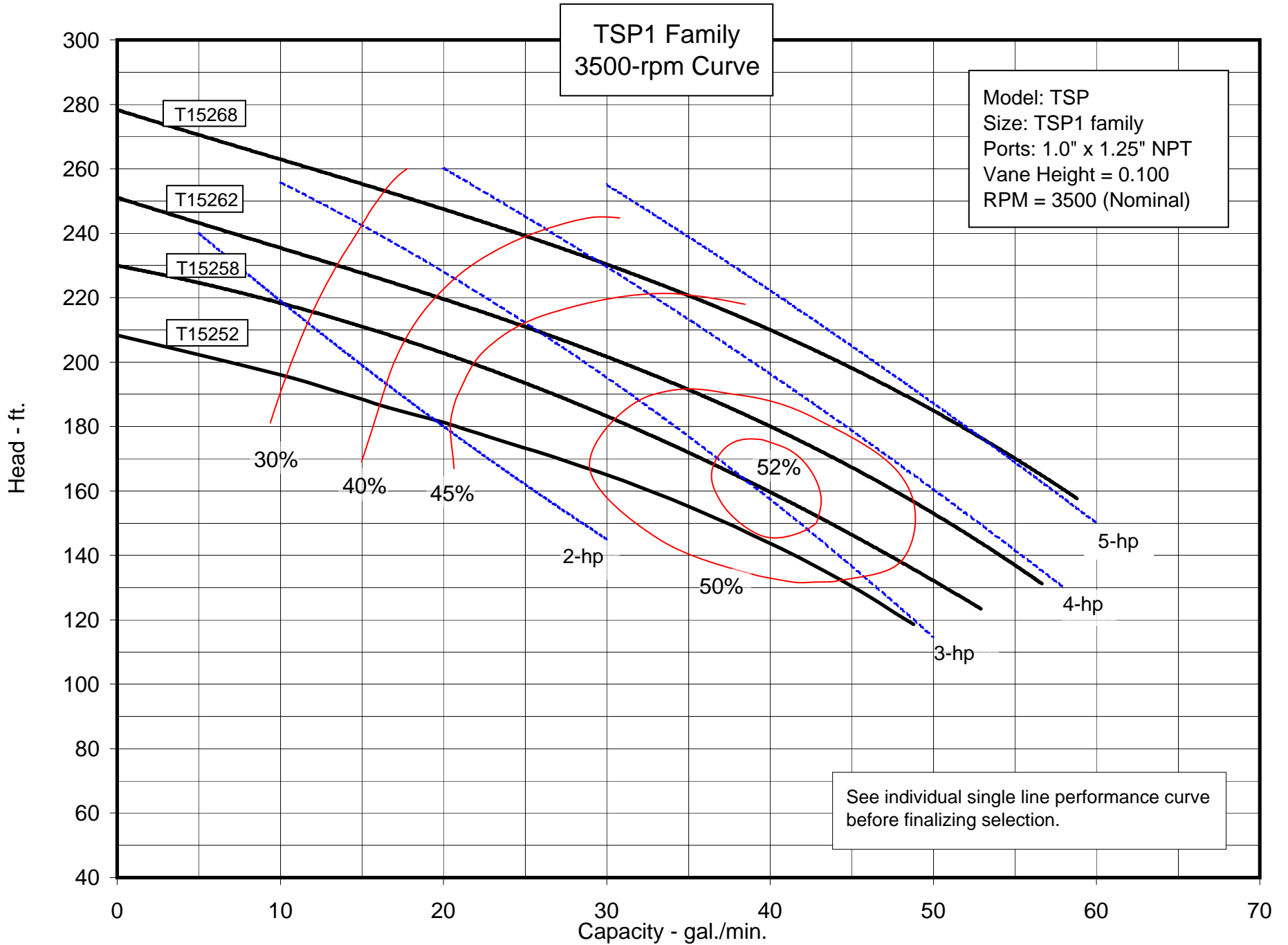
AMERICAN STAINLESS PUMPS

STAINLESS STEEL PUMPS FOR THE COMMERCIAL MARKETPLACE

# TSP STAINLESS PUMP

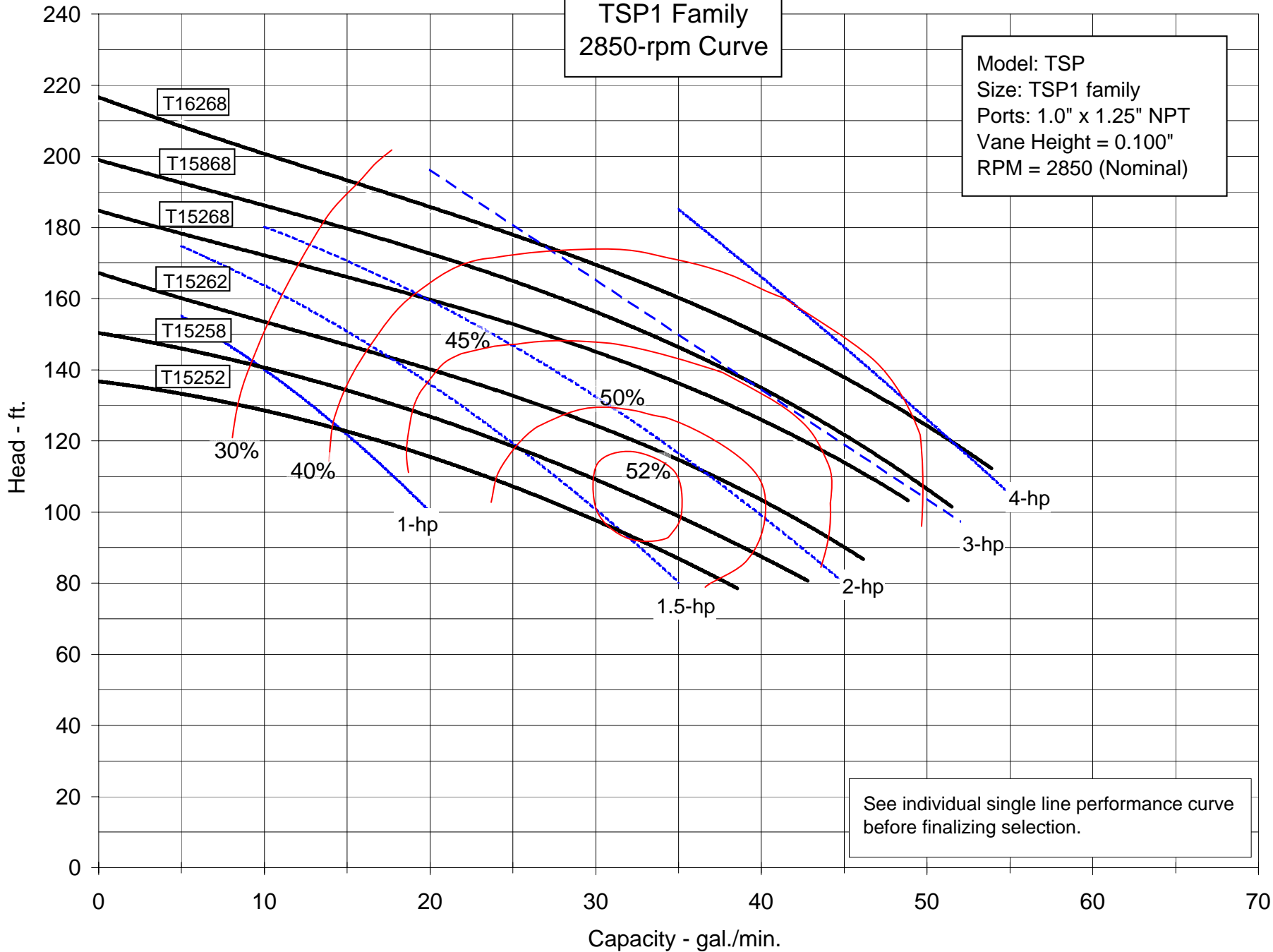
- Two stage high pressure pump produces up to 115 psig
- Flow Rates up to 60 gpm
- System pressures up to 120 psig
- Temperatures up to 250°F
- Impellers up to 6.7" in diameter
- Service in both 50 and 60Hz
- 56J Frame: 2 through 5HP motors available
- 1.0" x 1.25" NPT Connections
- Multiple mechanical seal configurations





TSP1 Family  
2850-rpm Curve

Model: TSP  
Size: TSP1 family  
Ports: 1.0" x 1.25" NPT  
Vane Height = 0.100"  
RPM = 2850 (Nominal)



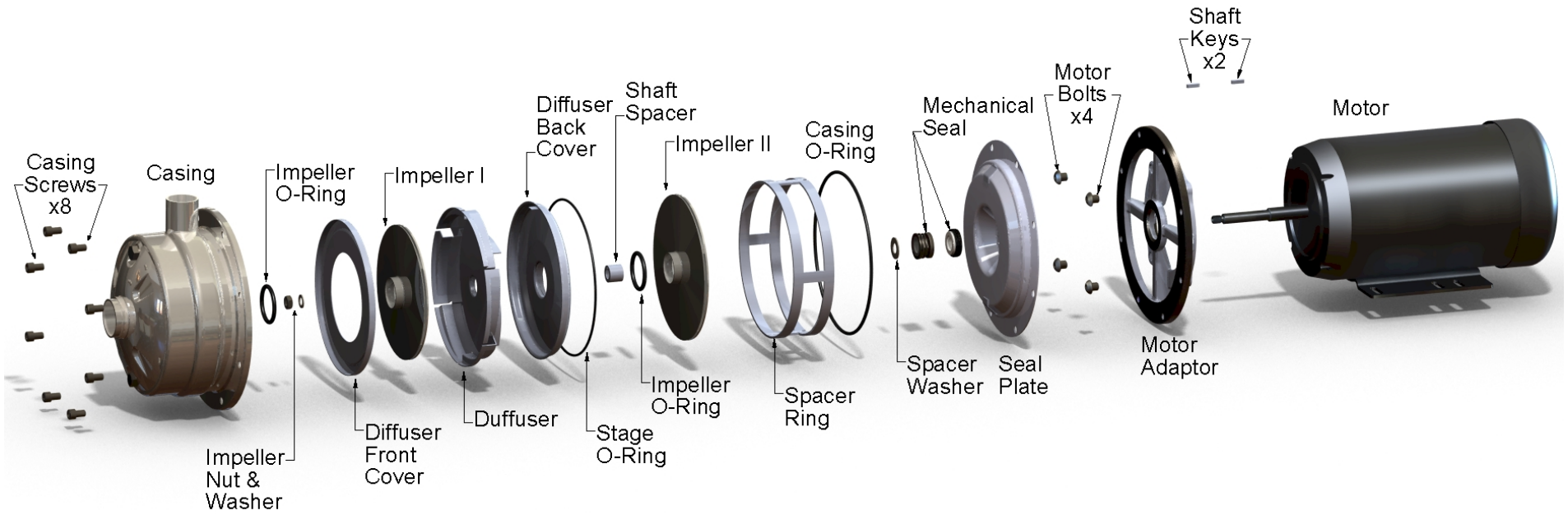
See individual single line performance curve before finalizing selection.



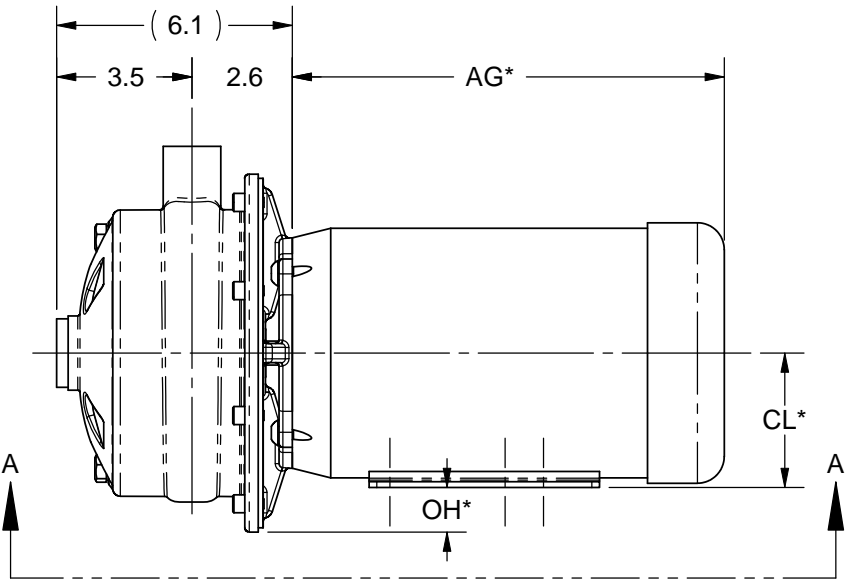
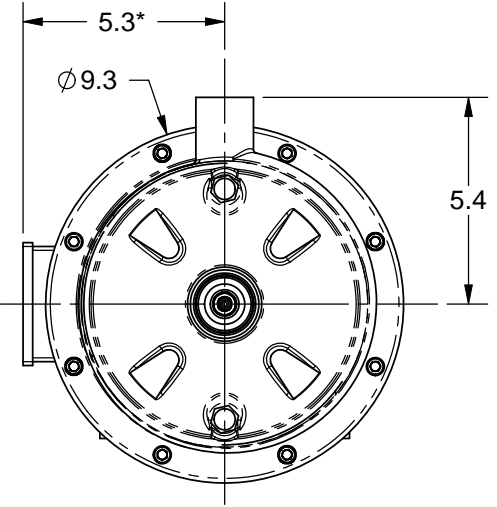
# AMERICAN STAINLESS PUMPS

Stainless Steel Pumps for the Commercial Marketplace

## Model TSP Exploded View

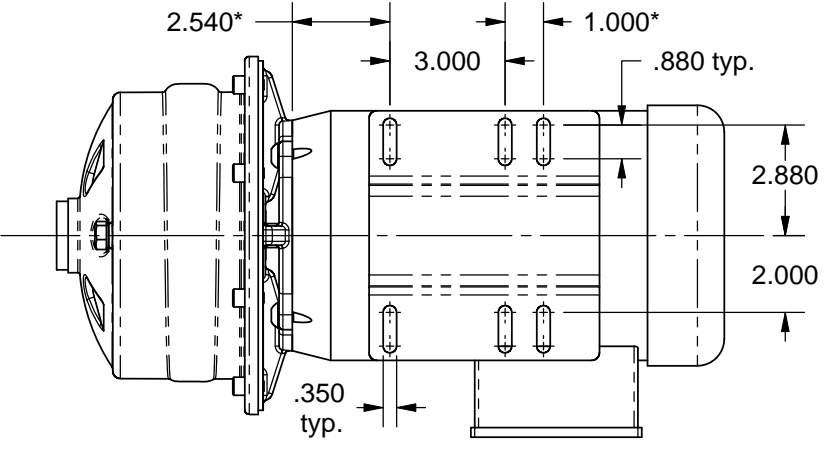


THE INFORMATION CONTAINED IN THIS DRAWING IS THE SOLE PROPERTY OF AMERICAN STAINLESS PUMPS ANY REPRODUCTION IN PART OR WHOLE WITHOUT THE WRITTEN PERMISSION OF AMERICAN STAINLESS PUMPS IS PROHIBITED.



Motor HP	Enc.	Power	AG	CL	OH	Lbs.
3	TEFC	3-phase 60-Hz	12.18	3.5	1.2	35
5	TEFC	3-phase 60 Hz	13.56	3.5	1.2	45

\* May vary by motor manufacturer.



SECTION A-A MOUNTING HOLES

MATERIAL: 304 SS Wetted Parts  
 MANUFACTURING PROCESS:

CAD GENERATED DRAWING NOT FOR CONSTRUCTION UNLESS INDICATED. DO NOT SCALE DRAWING.  
**ASP AMERICAN STAINLESS PUMPS**  
 LOS ANGELES, CALIFORNIA

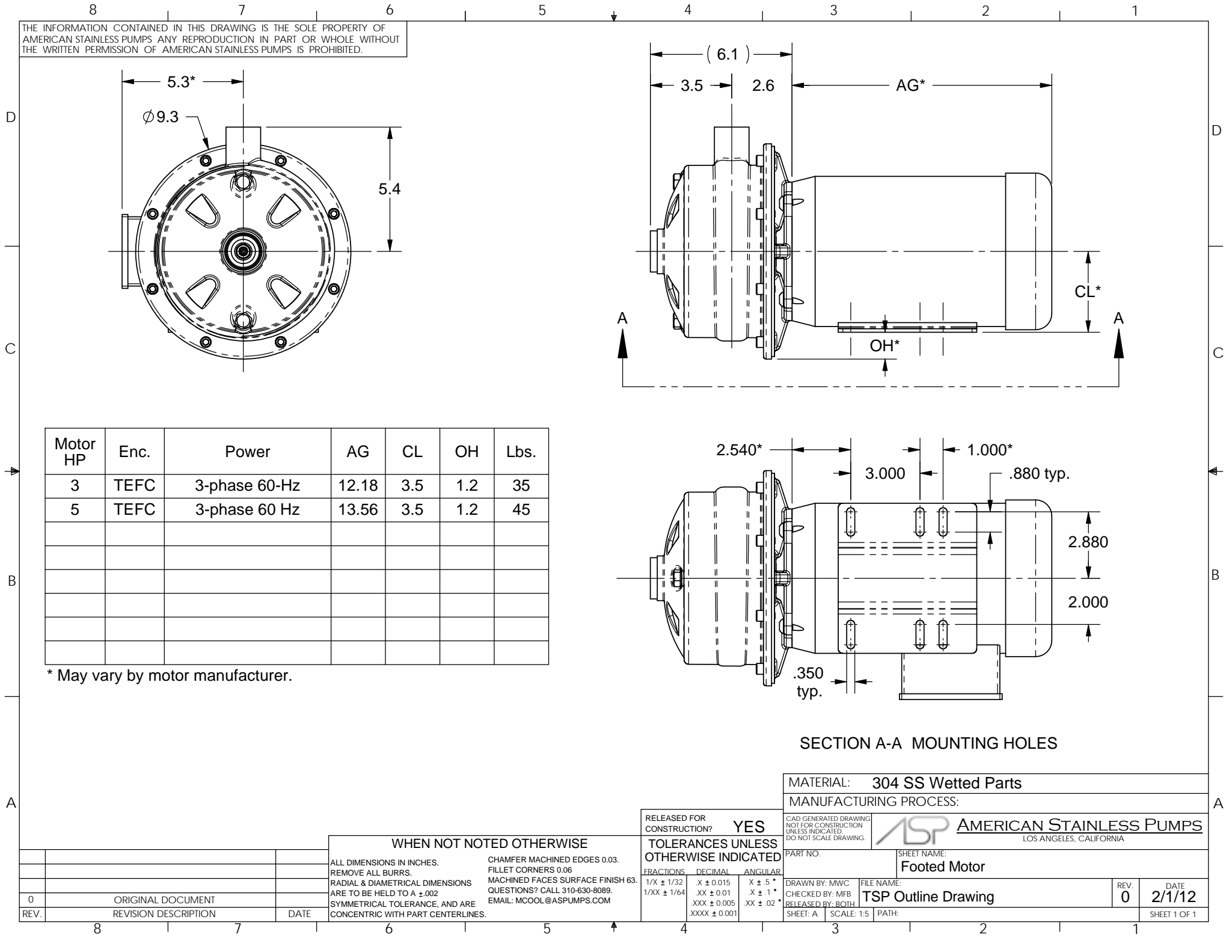
PART NO. SHEET NAME:  
**Footed Motor**

DRAWN BY: MWC FILE NAME: TSP Outline Drawing  
 CHECKED BY: MFB  
 RELEASED BY: BOTH  
 SHEET: A SCALE: 1:5 PATH:  
 REV. 0 DATE 2/1/12  
 SHEET 1 OF 1

**WHEN NOT NOTED OTHERWISE**  
 ALL DIMENSIONS IN INCHES. CHAMFER MACHINED EDGES 0.03. FILLET CORNERS 0.06.  
 REMOVE ALL BURRS. MACHINED FACES SURFACE FINISH 63.  
 RADIAL & DIAMETRICAL DIMENSIONS ARE TO BE HELD TO A ±.002  
 SYMMETRICAL TOLERANCE, AND ARE CONCENTRIC WITH PART CENTERLINES.  
 QUESTIONS? CALL 310-630-8089. EMAIL: MCOOL@ASPUMPS.COM

RELEASED FOR CONSTRUCTION? **YES**  
**TOLERANCES UNLESS OTHERWISE INDICATED**  

FRACTIONS	DECIMAL	ANGULAR
1/XX ± 1/32	X ± 0.015	X ± 5 °
1/XX ± 1/64	.XX ± 0.01	.X ± 1 °
	.XXX ± 0.005	XX ± .02 °
	.XXXX ± 0.001	



# TSP Catalog Number Nomenclature

Rev. Date  
5/15/2013

T 1 52 68 4 5 T 3 F

Sample code for a model TSP, size 1x1.25  
with a 5.2" diameter impeller (1st Stage) and a 6.8" diameter impeller (2nd Stage)  
Carbon / Silicon Carbide / Viton, Type 16 mechanical seal,  
with a 5 HP, TEFC, 3/60/230-460V footed motor

<b>1st Symbol</b>	Pump Model	T = TSP: 304 SS, two-stage pump, threaded connections
-------------------	------------	---

<b>2nd Symbol</b>	Size Code	1 = 1.0" x 1.25" NPT female threaded nozzles
-------------------	-----------	--

<b>3rd &amp; 4th Symbol</b>	1st Stage Impeller Diameter	Digits indicate impeller diameter in inches (decimal form) Examples: 52 = 5.2" and 68 = 6.8"
-----------------------------	-----------------------------	---

<b>5th &amp; 6th Symbol</b>	2nd Stage Impeller Diameter	Digits indicate impeller diameter in inches (decimal form) Examples: 52 = 5.2" and 68 = 6.8"
-----------------------------	-----------------------------	---

<b>7th Symbol</b>	Mechanical Seal Type & Materials	<table border="1" style="width: 100%; border-collapse: collapse;"> <tr> <th colspan="2" style="text-align: left;">Type 16</th> <th colspan="2" style="text-align: left;">Type 21</th> </tr> <tr> <td>B = Car/Cer/Buna</td> <td>Stock</td> <td colspan="2" style="border: 1px solid black;">Consult Factory</td> </tr> <tr> <td>E = Car/Cer/EPR</td> <td>Stock</td> <td colspan="2"></td> </tr> <tr> <td>V = Car/Cer/Viton</td> <td>Stock</td> <td colspan="2"></td> </tr> <tr> <td>4 = Car/SiC/Viton</td> <td>Stock</td> <td colspan="2" style="text-align: center;">Standard</td> </tr> <tr> <td>5 = Car/SiC/EPR</td> <td>Stock</td> <td colspan="2"></td> </tr> <tr> <td>6 = SiC/SiC/Buna</td> <td>Stock</td> <td colspan="2"></td> </tr> <tr> <td>7 = SiC/SiC/EPR</td> <td>Stock</td> <td colspan="2"></td> </tr> <tr> <td>8 = SiC/SiC/Viton</td> <td>Stock</td> <td colspan="2"></td> </tr> <tr> <td>X = Special</td> <td></td> <td colspan="2"></td> </tr> </table>	Type 16		Type 21		B = Car/Cer/Buna	Stock	Consult Factory		E = Car/Cer/EPR	Stock			V = Car/Cer/Viton	Stock			4 = Car/SiC/Viton	Stock	Standard		5 = Car/SiC/EPR	Stock			6 = SiC/SiC/Buna	Stock			7 = SiC/SiC/EPR	Stock			8 = SiC/SiC/Viton	Stock			X = Special				
Type 16		Type 21																																									
B = Car/Cer/Buna	Stock	Consult Factory																																									
E = Car/Cer/EPR	Stock																																										
V = Car/Cer/Viton	Stock																																										
4 = Car/SiC/Viton	Stock	Standard																																									
5 = Car/SiC/EPR	Stock																																										
6 = SiC/SiC/Buna	Stock																																										
7 = SiC/SiC/EPR	Stock																																										
8 = SiC/SiC/Viton	Stock																																										
X = Special																																											
<b>Material Index</b>																																											
Material Format: Rotating Face / Stationary Face / Elastomer																																											
Car = Carbon																																											
Cer = Ceramic																																											
SiC = Silicon Carbide																																											
Note: Standard case and impeller o-ring material will match seal elastomer as selected above.																																											

<b>8th Symbol</b>	Motor HP	A = 1/3 HP	1 = 1 HP	3 = 3 HP
		B = 1/2 HP	E = 1.5 HP	5 = 5 HP
		C = 3/4 HP	2 = 2 HP	

<b>9th Symbol</b>	Motor Enclosure	D = Dripproof	X = Explosion Proof	S = Stainless Steel Motor (Special)
		T = TEFC	W = Washdown Duty	V = TENV (Special)

<b>10th Symbol</b>	Motor Power Details	<b>Power Rating</b>	<b>3500 RPM</b>	<b>1750 RPM</b>	<b>2900 RPM</b>
		1/60/115-230V	1	A	
		1/60/230V	2	B	
		3/60/230-460V	3	C	
		3/60/460V	4	D	
		3/60/575V	5	E	
		1/50 or 1/60 (dual)	V	G	V
		3/50 or 3/60 (dual)	S	U	S
		Special	X	X	X
		1/50/110-220V			W
		1/50/220V			Y
		3/50/380V			Z

<b>11th Symbol &amp; Up</b>	Special Construction Code. Consult factory for pricing and details. May indicate special OEM configuration.	F = Footed Motor T = Thermal Overload Protection (3 phase motors only) X = Special - Consult factory with serial number
-----------------------------	---	---